


FISHWAY STATUS REPORT

Date: 5/25/2014
 Inspection Period: 5/18 thru 5/24/2014

All JD Fishways are inspected twice per day during fish season, March. 1 - Nov. 31
 Frequent monitoring of the PLC displays in SMF Fisheries Office as necessary.



**US Army Corps
of Engineers**
Portland District

JOHN DAY DAM

JD/WC Project-Fisheries
 P.O. Box 823
 Rufus, Oregon 97050
 Phone: 541-506-7860

John Day Dam	Inspections	Criteria	Total Number of Inspections: 14	Temperature: 56 F
	Out of Criteria	Limit		Secchi: 3.6 Ft.
NORTH FISHWAY			In regular service. Five AWS pumps available since 4/11.	
Exit differential	0	≤ 0.5'		
Exit Control weirs	0	High setting	High setting is normal for JDN	
Count station differential	0	≤ 0.3'		
Weir crest depth (DS gauge)	0	1.3' ± 0.1'	Temporary 1.3' for shad passage since 5/22.	
Entrance differential	0	1.0' - 2.0'	AVG 1.5	
SOUTH FISHWAY			In regular service with all three AWS turbines.	
Exit differential	0	≤ 0.5'		
Exit Control weirs	0	MID setting	MID is normal for JDS	
Count station differential	0	≤ 0.3'		
Weir crest depth (US gauge)	0	1.3' ± 0.1'	Temporary 1.3' for shad passage since 5/22.	
South entrance differential	0	1.0' - 2.0'	AVG 1.3	
Entrance weir SE1	0	depth (≥ 8')	AVG 8.5	
Collection channel velocity	0	1.5 - 4 fps	AVG 3.16	
Bay 1 differential	0	1.0' - 2.0'	AVG 1.6	
N. Entrance PH(Bay 19)differential	0	1.0' - 2.0'	AVG 1.7	
Entrance weir NE1	0	depth (≥ 8')	AVG 9.5	
Entrance weir NE2	0	depth (≥ 8')	AVG 9.5	
JUVENILE PASSAGE			JBS/SMF in regular service since 3/30.	
Forebay/bypass conduit differential	0	4.0' - 5.0'	AVG 4.6	
Submersible traveling screens	0	visual inspect	4 bad STSs were found during camera inspection the week 5/19; repaired and reinstalled.	
Turbine trashrack drawdown	0	<1.5', wkly	JD Structural raking of MU trashracks occurs the last week of each month.	
Vert barrier screen drawdown	0	<1.5', wkly	JD Fisheries crew performs frequent gate wells' drawdowns depending on river debris.	
Spill volume	0	30/40 %	Per the PNNL experimental block design, changing every two days.	
Spill pattern	0	per FPP		
Turbine Unit Priority	0	per FPP		
Turbine 1% Efficiency	0	per FPP		

SMOLT MONITORING FACILITY

Operation: SMF is in sampling mode since 3/31 AM. Daily 24 hrs smolt sampling by PSMFC crew since 4/1.

JD Fisheries works regular 24/7 swing shift schedule as required by FPP; it will continue this until the end of sampling season on 9/15.

Debris: Moderate to heavy; primarily tumbleweeds with some sticks, branches, and wooden debris.

Maintenance: None.

Research:

Battelle's collection, tagging and holding of juvenile salmonids at JD SMF lab underway. The last collection day for the spring component is 5/28.

A summer study component will start in early June after a short, approximately one week long break.

Fallbacks: AVG: 34 MAX: 57 MIN: 23

OTHER ISSUES:

JOHN DAY

BIRDS : see the Avian Numbers tab. We report all species and locations, but in reality only gulls in the tailrace BRZ are relevant at JD.

USDA hazing from a boat started on 4/17; one 8 hrs shift, 7 days a week will continue through the end of July. A slight increase in numbers of gulls PM after hazing stops, but almost all are flying downstream of the avian tailrace BRZ grid. Gull predation at JD continues to be estimated as minimal.

124 out of 125 total primary lines are intact/ in placed.

Operations:

JD North Fishway is in regular service and meeting the FPP criteria.

JD South Fishway in regular service and meeting the FPP criteria.

Maintenance:

Four bad STSs were found during the last week's underwater camera inspections. The damages were minor and were easily repaired at location.

MUs intake trashracks' raking is scheduled for the week of 5/26.

JD North AWS pumps - five out of total six are available for service since 4/11. AWS pump # 4 continues in OOS status due to its lower bearing issues.

JD Engineering/contractor continue with its repairs.

Calibration: 5/14/2014 All sensors were within the criteria of 0.3' .

Gatewell Drawdown: 5/11/2014 and 5/14/2014 Three measurements above 1.0' on 5/11 and none on 5/14.

Research:

JD Fisheries coordinating with research groups for the upcoming 2014 studies:

Tribal collection of adult lamprey at JD CS is slated to commence in early July.

PSMFC/WDFW dam angling from the JD PH tailrace deck for pikeminnow underway.

U of I Testing of JD North LPS (Lamprey Passage System) preparing for their passage season's work starting in June 2014.

JD Summer Juvenile Salmonids passage survival will start in June. PNNL continues collecting and tagging of fish at JD SMF for the McNary Spring passage survival.

2014 Adult Salmonids counting by Normandeau Ass. continues through October 31 as required by FPP.

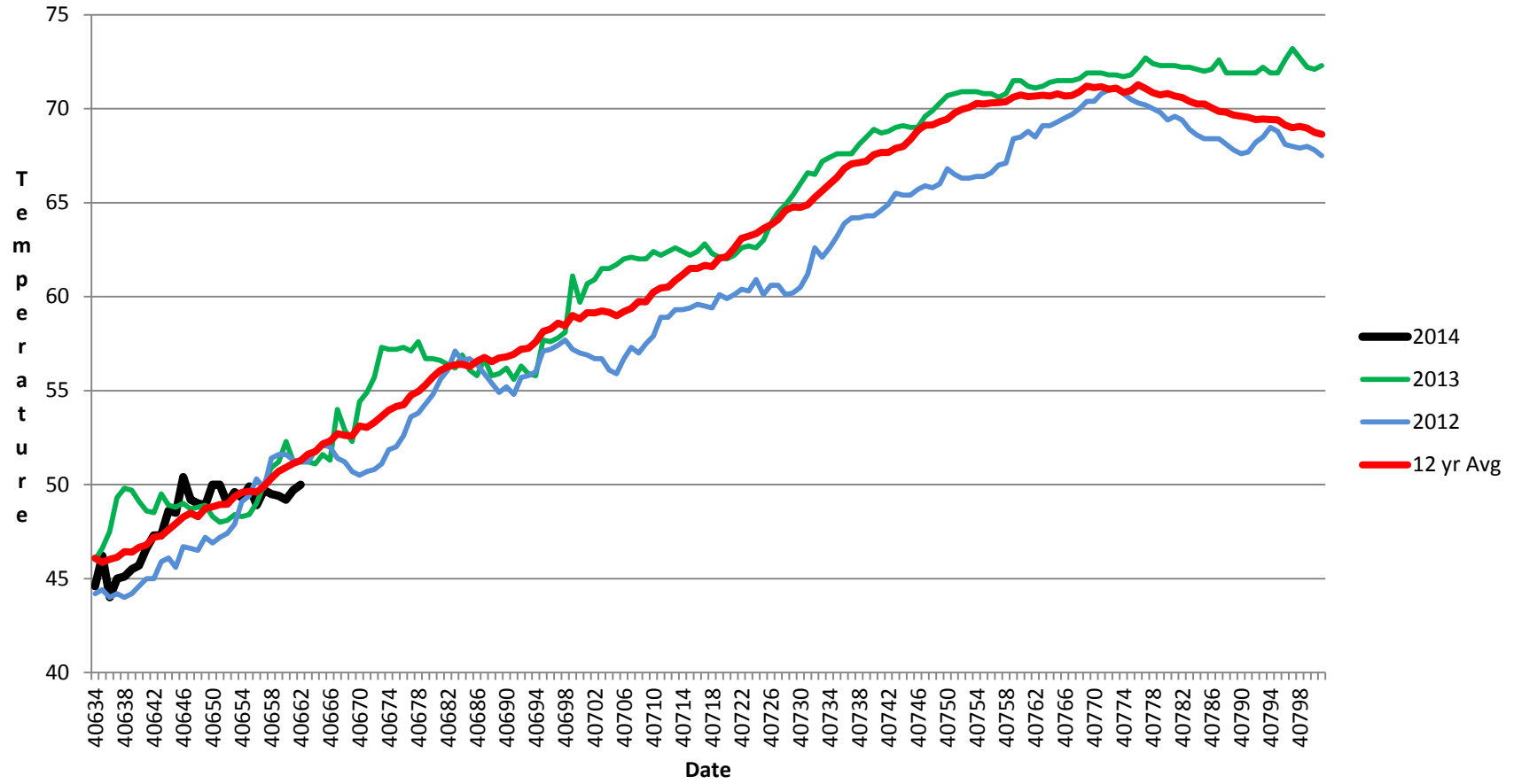
Adult Salmonids Radio telemetry evaluations are ongoing at both JD adult fishway. University of Idaho crew is in charge of detecting of all adult salmonids, which were tagged and released at Bonneville Dam.

Glen A. Smith PE

Date: ___ 29-May-14

OPM John Day/Willow Creek Project

JDA SMF Water Temp



JDA COLLECTION CHANNEL VELOCITY

Date 26-May-14
By: pk

Bay(s)	Time	Sec.	Velocity (f/s)
0-2	01:27.0	87	2.07
2 - 4	0:02:19	139	3.46
4 - 6	0:03:17	197	3.10
6 - 8	0:04:15	255	3.10
8 - 10	0:05:14	314	3.05
10 - 12	0:06:12	372	3.10
12 - 14	0:07:08	428	3.21
14 - 16	0:08:05	485	3.16
16 - 18	0:08:48	528	4.19

3.16

2014 Piscivorous Bird Counts

F=foraging, NF=non-foraging

Project	Date	Session	Time (24 hr)	Zone	Gull		Cormorant		Caspian tern		American white pelican	
					F	NF	F	NF	F	NF	F	NF
John Day	18-May-14	1	7:30	PHFB	6	0	0	0	0	0	0	0
John Day	18-May-14	1	7:30	SWFB	0	0	0	0	0	0	0	0
John Day	18-May-14	1	7:30	PH1	0	0	0	0	0	0	0	0
John Day	18-May-14	1	7:30	PH2	0	0	0	0	0	0	0	0
John Day	18-May-14	1	7:30	PH3	0	0	0	0	0	0	0	0
John Day	18-May-14	1	7:30	SW1	0	0	0	0	0	0	0	0
John Day	18-May-14	1	7:30	SW2	0	0	0	0	0	0	0	0
John Day	18-May-14	1	7:30	SW3	7	0	0	0	0	0	0	0
John Day	18-May-14	2	14:00	PHFB	0	17	0	0	0	0	0	0
John Day	18-May-14	2	14:00	SWFB	0	0	0	0	0	0	0	0
John Day	18-May-14	2	14:00	PH1	0	0	0	0	0	0	0	0
John Day	18-May-14	2	14:00	PH2	0	0	0	0	0	0	0	0
John Day	18-May-14	2	14:00	PH3	15	0	0	0	0	0	0	0
John Day	18-May-14	2	14:00	SW1	0	0	0	0	0	0	0	0
John Day	18-May-14	2	14:00	SW2	0	0	0	0	0	0	0	0
John Day	18-May-14	2	14:00	SW3	22	0	0	0	0	0	0	0
John Day	19-May-14	1	7:30	PHFB	0	7	0	0	0	0	0	0
John Day	19-May-14	1	7:30	SWFB	0	0	0	0	0	0	0	0
John Day	19-May-14	1	7:30	PH1	0	0	0	0	0	0	0	0
John Day	19-May-14	1	7:30	PH2	1	0	0	0	0	0	0	0
John Day	19-May-14	1	7:30	PH3	7	0	0	0	0	0	0	0
John Day	19-May-14	1	7:30	SW1	0	0	0	0	0	0	0	0
John Day	19-May-14	1	7:30	SW2	0	0	0	0	0	0	0	0
John Day	19-May-14	1	7:30	SW3	26	0	0	0	0	0	0	0
John Day	19-May-14	2	14:00	PHFB	0	7	0	0	0	0	0	0
John Day	19-May-14	2	14:00	SWFB	0	3	0	0	0	0	0	0
John Day	19-May-14	2	14:00	PH1	0	0	0	0	0	0	0	0
John Day	19-May-14	2	14:00	PH2	0	0	0	0	0	0	0	0
John Day	19-May-14	2	14:00	PH3	3	0	0	0	0	0	0	0
John Day	19-May-14	2	14:00	SW1	0	0	0	0	0	0	0	0
John Day	19-May-14	2	14:00	SW2	0	0	0	0	0	0	0	0
John Day	19-May-14	2	14:00	SW3	17	0	0	0	0	0	0	0
John Day	20-May-14	1	7:30	PHFB	0	0	0	0	0	0	0	0
John Day	20-May-14	1	7:30	SWFB	0	2	0	0	0	0	0	0

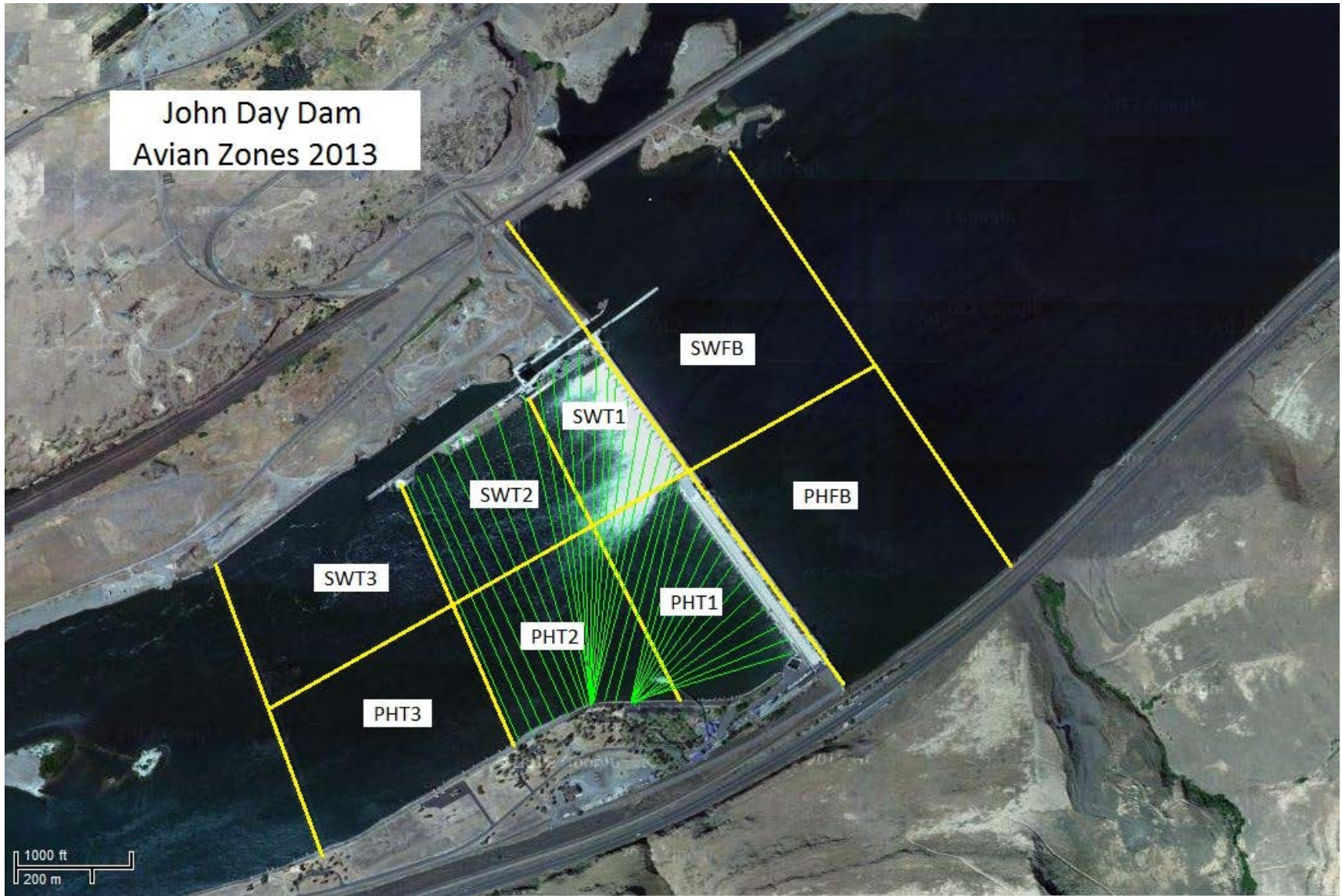
John Day	22-May-14	2	14:00	PH1	0	0	0	0	0	0	0	0
John Day	22-May-14	2	14:00	PH2	4	0	0	0	0	0	0	0
John Day	22-May-14	2	14:00	PH3	13	0	0	0	0	0	0	0
John Day	22-May-14	2	14:00	SW1	0	0	0	0	0	0	0	0
John Day	22-May-14	2	14:00	SW2	2	0	0	0	0	0	0	0
John Day	22-May-14	2	14:00	SW3	71	0	0	0	0	0	0	0
John Day	23-May-14	1	7:30	PHFB	0	0	0	0	0	0	0	0
John Day	23-May-14	1	7:30	SWFB	0	0	0	0	0	0	0	0
John Day	23-May-14	1	7:30	PH1	0	0	0	0	0	0	0	0
John Day	23-May-14	1	7:30	PH2	2	0	0	0	0	0	0	0
John Day	23-May-14	1	7:30	PH3	3	0	0	0	0	0	0	0
John Day	23-May-14	1	7:30	SW1	0	0	0	0	0	0	0	0
John Day	23-May-14	1	7:30	SW2	3	0	0	0	0	0	0	0
John Day	23-May-14	1	7:30	SW3	25	0	0	0	0	0	0	0
John Day	23-May-14	2	14:00	PHFB	0	0	0	0	0	0	0	0
John Day	23-May-14	2	14:00	SWFB	0	0	0	0	0	0	0	0
John Day	23-May-14	2	14:00	PH1	0	0	0	0	0	0	0	0
John Day	23-May-14	2	14:00	PH2	5	0	0	0	0	0	0	0
John Day	23-May-14	2	14:00	PH3	3	0	0	0	0	0	0	0
John Day	23-May-14	2	14:00	SW1	0	0	0	0	0	0	0	0
John Day	23-May-14	2	14:00	SW2	0	0	0	0	0	0	0	0
John Day	23-May-14	2	14:00	SW3	64	0	0	0	0	0	0	0
John Day	24-May-14	1	7:30	PHFB	0	0	0	0	0	0	0	0
John Day	24-May-14	1	7:30	SWFB	0	0	0	0	0	0	0	0
John Day	24-May-14	1	7:30	PH1	0	0	0	0	0	0	0	0
John Day	24-May-14	1	7:30	PH2	3	0	0	0	0	0	0	0
John Day	24-May-14	1	7:30	PH3	4	0	0	0	0	0	0	0
John Day	24-May-14	1	7:30	SW1	0	0	0	0	0	0	0	0
John Day	24-May-14	1	7:30	SW2	4	0	0	0	0	0	0	0
John Day	24-May-14	1	7:30	SW3	37	0	0	0	0	0	0	0
John Day	24-May-14	2	14:00	PHFB	0	0	0	0	0	0	0	0
John Day	24-May-14	2	14:00	SWFB	0	0	0	0	0	0	0	0
John Day	24-May-14	2	14:00	PH1	0	0	0	0	0	0	0	0
John Day	24-May-14	2	14:00	PH2	6	0	0	0	0	0	0	0
John Day	24-May-14	2	14:00	PH3	3	0	0	0	0	0	0	0
John Day	24-May-14	2	14:00	SW1	0	0	0	0	0	0	0	0
John Day	24-May-14	2	14:00	SW2	4	0	0	0	0	0	0	0
John Day	24-May-14	2	14:00	SW3	51	0	0	0	0	0	0	0

Grebe		Total birds in zone	Observer	Notes
F	NF			
9	29	44	Jim	
0	0	0	Jim	
0	0	0	Jim	
0	0	0	Jim	
0	0	0	Jim	
0	0	0	Jim	
0	0	0	Jim	
0	0	7	Jim	
7	28	52	Jim	
0	0	0	Jim	
0	0	0	Jim	
0	0	0	Jim	
0	0	15	Jim	
0	0	0	Jim	
0	0	0	Jim	
0	0	22	Jim	
7	45	59	Jim	
0	0	0	Jim	
0	0	0	Jim	
0	0	1	Jim	
0	0	7	Jim	
0	0	0	Jim	
0	0	0	Jim	
0	0	26	Jim	
9	19	35	Jim	
0	0	3	Jim	
0	0	0	Jim	
0	0	0	Jim	
0	0	3	Jim	
0	0	0	Jim	
0	0	0	Jim	
0	0	17	Jim	
8	38	46	Jim	
2	4	8	Jim	

0	0	0	Jim
0	0	3	Jim
0	0	6	Jim
0	0	0	Jim
0	0	0	Jim
0	0	37	Jim
0	0	0	Jim
0	0	0	Jim
0	0	0	Jim
0	0	20	Jim
0	0	0	Jim
0	0	0	Jim
0	0	53	Jim
27	0	28	Eric
0	0	0	Eric
0	0	0	Eric
0	0	1	Eric
0	0	2	Eric
0	0	0	Eric
0	0	0	Eric
0	0	27	Eric
27	0	27	Eric
0	0	0	Eric
0	0	0	Eric
0	0	8	Eric
0	0	13	Eric
0	0	0	Eric
0	0	0	Eric
0	0	67	Eric
33	0	33	Eric
0	0	0	Eric
0	0	0	Eric
0	0	2	Eric
0	0	7	Eric
0	0	0	Eric
0	0	0	Eric
0	0	39	Eric
17	0	17	Eric
0	0	0	Eric

0	0	0	Eric
0	0	4	Eric
0	0	13	Eric
0	0	0	Eric
0	0	2	Eric
0	0	71	Eric
33	0	33	Eric
0	0	0	Eric
0	0	0	Eric
0	0	2	Eric
0	0	3	Eric
0	0	0	Eric
0	0	3	Eric
0	0	25	Eric
27	0	27	Eric
0	0	0	Eric
0	0	0	Eric
0	0	5	Eric
0	0	3	Eric
0	0	0	Eric
0	0	0	Eric
0	0	64	Eric
31	0	31	Eric
0	0	0	Eric
0	0	0	Eric
0	0	3	Eric
0	0	4	Eric
0	0	0	Eric
0	0	4	Eric
0	0	37	Eric
27	0	27	Eric
0	0	0	Eric
0	0	0	Eric
0	0	6	Eric
0	0	3	Eric
0	0	0	Eric
0	0	4	Eric
0	0	51	Eric

John Day Dam
Avian Zones 2013



John Day:

	Temp:	Secchi:	Fallbacks
Sun	55	5.5	39
Mon	55	5.5	57
Tues	56	4.0	27
Wed	56	3.0	30
Thur	57	2.5	36
Fri	57	2.0	23
Sat	58	3.0	26
AVG:	56	AVG: 3.6	AVG 34
			MAX 57
			MIN 23

	NE1	NE2	S.Ent	SE1	N.Ent	JBS Diff	Bay1	Bay19
Sun	10.0	10.0	1.4	8.4	1.5	4.5	1.4	1.4
Sun	9.9	9.9	1.2	8.2	1.7	4.5	1.5	1.7
Mon	9.4	9.4	1.3	8.3	1.4	4.6	1.6	1.8
Mon	10.0	10.0	1.2	8.3	1.6	4.7	1.4	1.7
Tues	9.8	9.8	1.3	8.3	1.6	4.5	1.6	1.8
Tues	9.1	9.1	1.2	8.4	1.6	4.6	1.5	1.9
Wed	8.6	8.5	1.4	9.2	1.5	4.6	1.8	1.8
Wed	8.6	8.6	1.3	8.3	1.5	4.6	1.6	1.7
Thur	9.4	9.4	1.4	9.1	1.5	4.6	1.8	1.8
Thur	9.4	9.4	1.4	8.5	1.5	4.6	1.9	1.9
Fri	10.5	10.5	1.3	8.5	1.6	4.6	1.8	1.8
Fri	10.1	10.1	1.2	9.2	1.5	4.6	1.5	1.6
Sat	9.3	9.3	1.4	8.3	1.5	4.6	1.7	1.7
Sat	9.3	9.3	1.4	8.4	1.5	4.5	1.8	1.7
AVG:	9.5	9.5	1.3	8.5	1.5	4.6	1.6	1.7